

Seat Rails and Seat Parts Seat Roller Housings

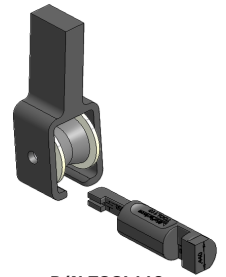
Seat Roller Housing Gauge for Cessna Aircraft

P/N TOOL110

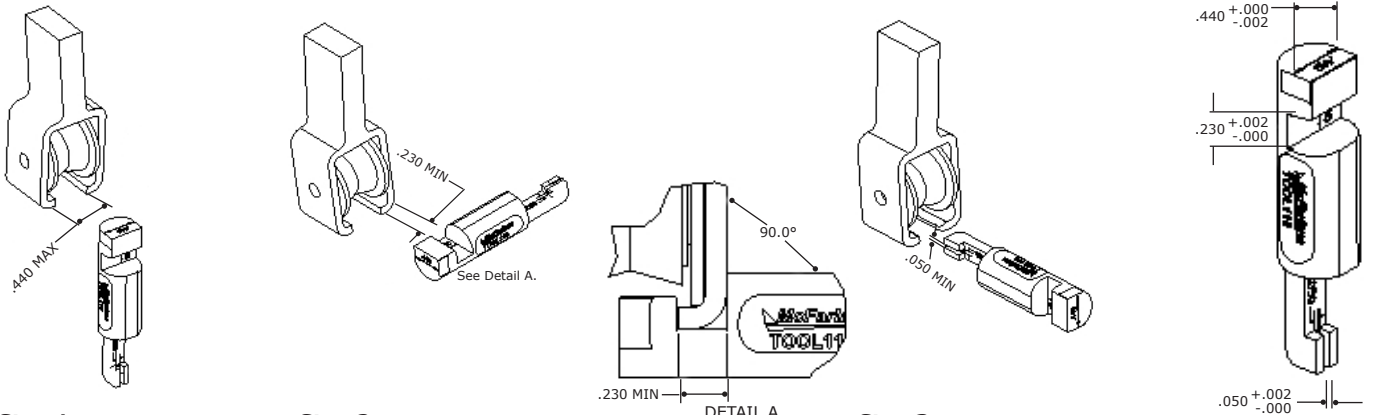
- Hardened Stainless Steel
- Save time! Ten times faster than calipers
- Step by step instructions
- Measures all three dimensions without removing rollers

Checks Cessna seat roller housing limits as per FAA AD 2011-10-09

The McFarlane Seat Roller Housing Gauge is designed to facilitate inspection of seat roller housings for wear in Cessna aircraft as required by mandatory FAA AD 2011-10-09. Designed for seat roller housings that are replaceable, this gauge simplifies determining whether the housing is in or out of tolerance by allowing the areas of concern to be gauged, as opposed to measuring individual attributes on each seat roller housing with calipers. Do not use on welded/non-replaceable seat roller housings.



P/N TOOL110



Step 1.
.440 gauge surfaces must not enter space between housing tangs.

Step 2.
The bend area of the tang must not enter the space on the gauge marked .230. See Detail A.

Step 3.
The .050 space on the gauge must not fit on the worn area of the tang.

To calibrate; ensure gauge dimensions are within the tolerances shown above.

Seat Roller Housings for Cessna Aircraft

Save \$\$

- Anodized for improved wear and corrosion resistance
- Precision machined with perfected dimensions for smooth installation and operation
- FAA-PMA direct replacement
- Seat roller housings for most single engine Cessna and Skymaster
- Replace out of spec housings as required by FAA AD 2011-10-09
- Convenient flowchart to determine correct housings for your aircraft



P/N MC1714000-33



P/N MC1200603-42



P/N MC1414104-39



P/N MC1414104-61B

Housing/Bracket Assemblies - P/N's with B suffix

Save time and money with housing/bracket assemblies. Most housings with a locking pin hole are available with or without the MC1414104-8 bracket. Just add a "B" suffix to the housing part number to buy the complete assembly.

McFarlane highly recommends buying complete assemblies. The bracket rivet spacing is very close making riveting difficult without special tooling.

Bracket also available separately.

Typical seat roller housing

Typical seat roller housing-bracket assembly

Bracket
P/N MC1414104-8

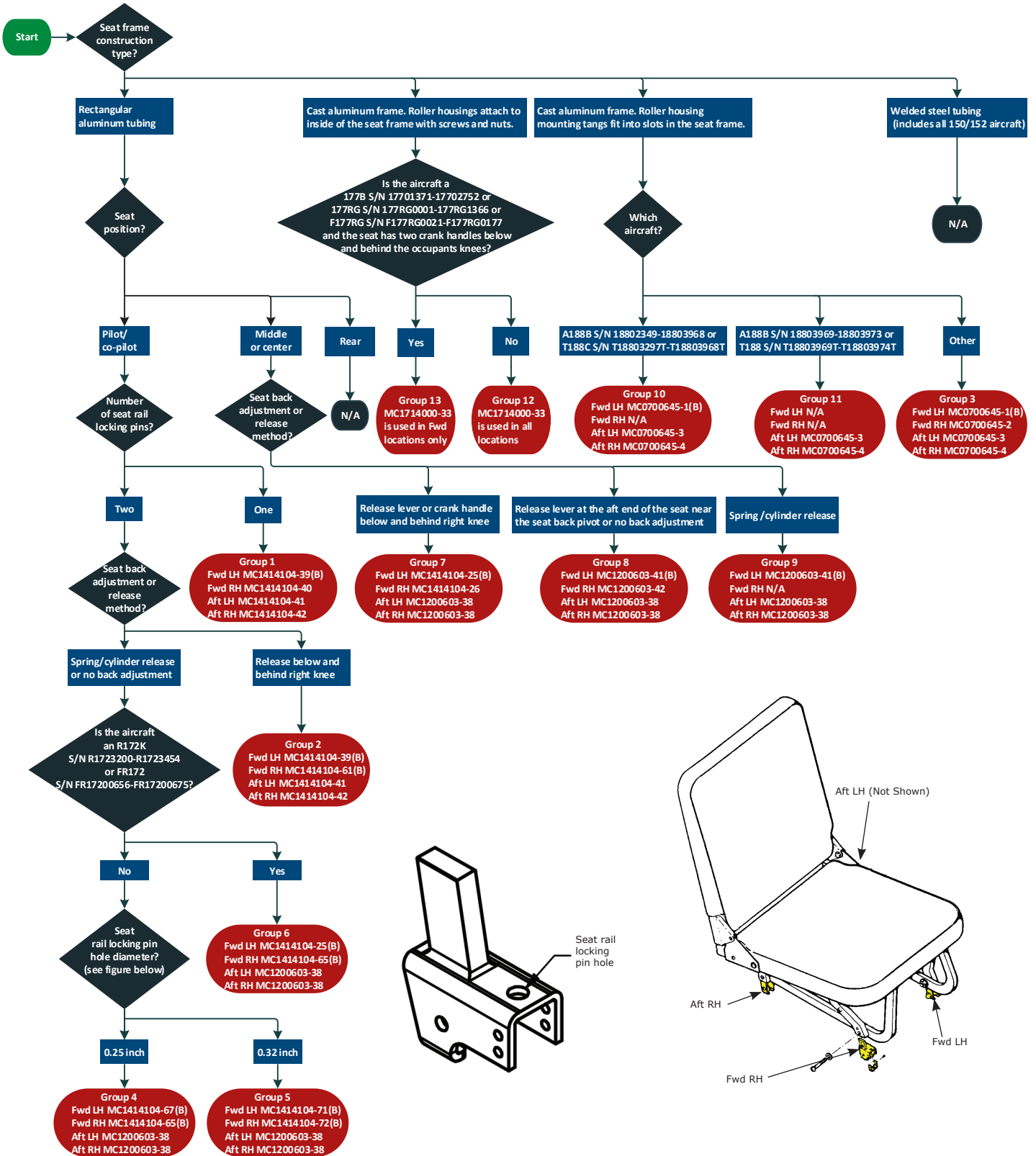
Roller housing/bracket assemblies save time. The old bracket does not have to be removed and reinstalled.

Flowchart to determine correct housings on the following page

Seat Rails and Seat Parts Seat Roller Housings

Need help selecting the correct housing for your seat?

With over two dozen part numbers and many different seat options, this can be very challenging. Only McFarlane has a convenient flowchart to make it easy!



Seat Rails

Seat Rails and Seat Parts Seat Roller Housings

Group 1		Group 2	
<p>Aft RH P/N MC1414104-42</p> <p>Side View End View</p>	<p>Aft LH P/N MC1414104-41</p> <p>Side View End View</p>	<p>Aft RH P/N MC1414104-42</p> <p>Side View End View</p>	<p>Aft LH P/N MC1414104-41</p> <p>Side View End View</p>
<p>Fwd RH P/N MC1414104-40</p> <p>Side View End View</p>	<p>Fwd LH P/N MC1414104-39 P/N MC1414104-8 bracket available. Add "B" suffix to housing P/N for housing/bracket assembly.</p> <p>Side View End View</p>	<p>Fwd RH P/N MC1414104-61 P/N MC1414104-8 bracket available. Add "B" suffix to housing P/N for housing/bracket assembly.</p> <p>Side View End View</p>	<p>Fwd LH P/N MC1414104-39 P/N MC1414104-8 bracket available. Add "B" suffix to housing P/N for housing/bracket assembly.</p> <p>Side View End View</p>
Group 3		Group 4	
<p>Aft RH P/N MC0700645-4</p> <p>Side View End View</p>	<p>Aft LH P/N MC0700645-3</p> <p>Side View End View</p>	<p>Aft RH P/N MC1200603-38</p> <p>Side View End View</p>	<p>Aft LH P/N MC1200603-38</p> <p>Side View End View</p>
<p>Fwd RH P/N MC0700645-2</p> <p>Side View End View</p>	<p>Fwd LH P/N MC0700645-1 P/N MC1414104-8 bracket available. Add "B" suffix to housing P/N for housing/bracket assembly.</p> <p>Side View End View</p>	<p>Fwd RH P/N MC1414104-65 P/N MC1414104-8 bracket available. Add "B" suffix to housing P/N for housing/bracket assembly.</p> <p>Side View End View</p>	<p>Fwd LH P/N MC1414104-67 P/N MC1414104-8 bracket available. Add "B" suffix to housing P/N for housing/bracket assembly.</p> <p>Side View End View</p>
Group 5		Group 6	
<p>Aft RH P/N MC1200603-38</p> <p>Side View End View</p>	<p>Aft LH P/N MC1200603-38</p> <p>Side View End View</p>	<p>Aft RH P/N MC1200603-38</p> <p>Side View End View</p>	<p>Aft LH P/N MC1200603-38</p> <p>Side View End View</p>
<p>Fwd RH P/N MC1414104-72 P/N 2514044-2 bracket used with this housing is not available from McFarlane at this time.</p> <p>Side View End View</p>	<p>Fwd LH P/N MC1414104-71 P/N 2514044-2 bracket used with this housing is not available from McFarlane at this time.</p> <p>Side View End View</p>	<p>Fwd RH P/N MC1414104-65 P/N MC1414104-8 bracket available. Add "B" suffix to housing P/N for housing/bracket assembly.</p> <p>Side View End View</p>	<p>Fwd LH P/N MC1414104-25 P/N MC1414104-8 bracket available. Add "B" suffix to housing P/N for housing/bracket assembly.</p> <p>Side View End View</p>

Seat Rails

Group 7		Group 8			
<p>Aft RH P/N MC1200603-38</p> <p>Side View End View</p>	<p>Aft LH P/N MC1200603-38</p> <p>Side View End View</p>	<p>Aft RH P/N MC1200603-38</p> <p>Side View End View</p>	<p>Aft LH P/N MC1200603-38</p> <p>Side View End View</p>		
<p>Fwd RH P/N MC1414104-26</p> <p>Side View End View</p>	<p>Fwd LH P/N MC1414104-25 P/N MC1414104-8 bracket available. Add "B" suffix to housing P/N for housing/bracket assembly.</p> <p>Side View End View</p>	<p>Fwd RH P/N MC1200603-42</p> <p>Side View End View</p>	<p>Fwd LH P/N MC1200603-41 P/N MC1414104-8 bracket available. Add "B" suffix to housing P/N for housing/bracket assembly.</p> <p>Side View End View</p>		
Group 9		Group 10			
<p>Aft RH P/N MC1200603-38</p> <p>Side View End View</p>	<p>Aft LH P/N MC1200603-38</p> <p>Side View End View</p>	<p>Aft RH P/N MC0700645-4</p> <p>Side View End View</p>	<p>Aft LH P/N MC0700645-3</p> <p>Side View End View</p>		
<p>Fwd RH</p> <p>N/A</p>	<p>Fwd LH P/N MC1200603-41 P/N MC1414104-8 bracket available. Add "B" suffix to housing P/N for housing/bracket assembly</p> <p>Side View End View</p>	<p>Fwd RH</p> <p>N/A</p>	<p>Fwd LH P/N MC0700645-1 P/N MC1414104-8 bracket available. Add "B" suffix to housing P/N for housing/bracket assembly.</p> <p>Side View End View</p>		
Group 11		Group 12		Group 13	
<p>Aft RH P/N MC0700645-4</p> <p>Side View End View</p>	<p>Aft LH P/N MC0700645-3</p> <p>Side View End View</p>	<p>Aft RH P/N MC1714000-33</p>	<p>Aft LH P/N MC1714000-33</p>	<p>Aft RH</p> <p>N/A</p>	<p>Aft LH</p> <p>N/A</p>
<p>Fwd RH</p> <p>N/A</p>	<p>Fwd LH</p> <p>N/A</p>	<p>Fwd RH P/N MC1714000-33</p>	<p>Fwd LH P/N MC1714000-33</p>	<p>Fwd RH P/N MC1714000-33</p>	<p>Fwd LH P/N MC1714000-33</p>