

FAA-PMA Approved

Seat Rails for Cessna Aircraft

- Carefully engineered with many improvements
- Added strength and longer life
- Anodized for corrosion and wear resistance
- Easier installation
- Full interchangeability with the original Cessna parts



No Pre-Drilled Rivet Holes for Precise Installation

McFarlane seat rails do not have pre-drilled rivet holes in the rail base allowing the installer to exactly match the aircraft floor rivet pattern. McFarlane discovered while installing and developing our replacement seat rails that the seat rail attachment hole pattern was not consistent from aircraft to aircraft. Even small inconsistencies in the hole locations in the aircraft floor make installation of new seat rails very difficult. For this reason, McFarlane does not pre-drill rivet holes at the factory. (Existing stock may have a few pilot attachment holes drilled at the factory.) This allows the installer to precisely locate the attachment holes to match the holes in the aircraft floor. All special sized or machined attachment holes are machined to finish dimensions. It is necessary to replace all fasteners when the seat rails are installed.

Installation Tip:
The aircraft floor is subject to corrosion from moisture under the seat rails. Be sure to remove and treat any corrosion before installing the new seat rails.

More Material in the Right Places

After studying countless worn and failed seat rails McFarlane's rails were designed with 15% more metal in critical areas. The result is more crack resistance, durability, strength and longer life.



Seat Rails

Model	Serial Number	Inboard LH	Outboard LH	Outboard RH	Inboard RH	Template
150A,B,C,D,E,F	15059019 thru 15063059	MC0411545-2	MC0411545-1 2	MC0411545-1 2	MC0411545-2	
150F	15063060 thru 15063735	MC0411545-4	MC0411545-3 2	MC0411545-3 2	MC0411545-4	
150F,G,H,J,K,L	15063736 thru 15072628	MC0410219-2	MC0410219-1 2	MC0410219-1 2	MC0410219-2	
150L	15072629 thru 15073658	MC0410230-2	MC0410230-3 2	MC0410230-2	MC0410230-3	
150L,150M	15073659 thru 15079405	MC0410235-6 2	MC0410235-1 2	MC0410235-2	MC0410235-6 2	
A150K,L	A1500001 thru A1500276	MC0410219-2	MC0410219-1 2	MC0410219-1 2	MC0410219-2	
A150L	A1500277 thru A1500342	MC0410230-2	MC0410230-3 2	MC0410230-2	MC0410230-3	
A150L,M	A1500343 thru A1500734	MC0410235-6 2	MC0410235-1 2	MC0410235-2	MC0410235-6 2	
F150F	F1500001 thru F1500029	MC0411545-2	MC0411545-1 2	MC0411545-1 2	MC0411545-2	
F150F	F1500030 thru F1500067	MC0411545-4	MC0411545-3 2	MC0411545-3 2	MC0411545-4	
F150G,H,J,K,L	F1500068 thru F15000738	MC0410219-2	MC0410219-1 2	MC0410219-1 2	MC0410219-2	
F150L	F15000739 thru F15000863	MC0410230-2	MC0410230-3 2	MC0410230-2	MC0410230-3	
F150L,M	F15000864 thru F15001428	MC0410235-6 2	MC0410235-1 2	MC0410235-2	MC0410235-6 2	
FA150K,L	FA1500001 thru FA1500120	MC0410219-2	MC0410219-1 2	MC0410219-1 2	MC0410219-2	
FRA150L	FRA1500121 thru FRA1500166	MC0410219-2	2	MC0410219-1 2	MC0410219-2	
FRA150L,M	FRA1500167 thru FRA1500336	MC0410235-6 2	MC0410235-1	MC0410235-2	MC0410235-6 2	
152	15279406 thru 15286033	MC0410235-6 2	MC0410235-1	MC0410235-2	MC0410235-6 2	
A152	A1520735 thru A1521049	MC0410235-6 2	MC0410235-1	MC0410235-2	MC0410235-6 2	
F152	F15201429 thru F15201980	MC0410235-6 2	MC0410235-1	MC0410235-2	MC0410235-6 2	
FA152	FA1520337 thru FA1520425	MC0410235-6 2	MC0410235-1	MC0410235-2	MC0410235-6 2	
170, 170A,B	18000 thru 27169	MC0511000-14	MC0511000-15 2	MC0511000-14	MC0511000-15 2	SRTEM1
172, 172A,B,C	28000 thru 17249544	MC0511293-1	MC0511293-3 2	MC0511293-4	MC0511293-2 2	SRTEM1
172D,E	17249545 thru 17251822	MC0511240-4	MC0511240-2 2	MC0511240-3	MC0511240-6 2	SRTEM2
172F,G,H,I,K	17251823 thru 17258656	MC0511240-5	MC0511240-2 2	MC0511240-3	MC0511240-6 2	SRTEM2
172K	17258657 thru 17259223	MC0511240-9	MC0511240-7 2	MC0511240-8	MC0511240-10 2	SRTEM2
172L	17259224 thru 17260758	MC0511240-15	MC0511240-11 2	MC0511240-12	MC0511240-14 2	SRTEM2
172M,N	17260759 thru 17272884	MC0511243-4 2	MC0511243-5 2	MC0511243-6 2	MC0511243-4 2	SRTEM2
172N,P,Q	17272885 thru 17276516	MC2414002-2 2	MC2414002-1 2	MC2414002-2 2	MC2414002-1 2	SRTEM2
172P	17276517 thru 17276654	MC0514209-4 2	MC0514209-1 2	MC0514209-2 2	MC0514209-3 2	SRTEM2
NOTE: Cessna Parts Manual has	the location reversed on P/N 0514209-3 & 0514209-4. The information contained here has been verified to be correct.					
172RG	172RG0001 thru 172RG1191	MC2414002-2 2	MC2414002-1 2	MC2414002-2 2	MC2414002-1 2	SRTEM2
F172D,E	F1720001 thru F1720085	MC0511240-4	MC0511240-2 2	MC0511240-3	MC0511240-6 2	SRTEM2
F172F,G,H	F1720086 thru F17200739	MC0511240-5	MC0511240-2 2	MC0511240-3	MC0511240-6 2	SRTEM2
F172H	F17200740 thru F17200754	MC0511240-9	MC0511240-7 2	MC0511240-8	MC0511240-10 2	SRTEM2
F172K,L	F17200755 thru F17200904	MC0511240-15	MC0511240-11 2	MC0511240-12	MC0511240-14 2	SRTEM2
F172M,N	F17200905 thru F17201909	MC0511243-4 2	MC0511243-5 2	MC0511243-6 2	MC0511243-4 2	SRTEM2
F172N,P	F17201910 thru F17202238	MC2414002-2 2	MC2414002-1 2	MC2414002-2 2	MC2414002-1 2	SRTEM2
F172P	F17202239 thru F17202254	MC0514209-4 2	MC0514209-1 2	MC0514209-2 2	MC0514209-3 2	SRTEM2
NOTE: Cessna Parts Manual has	the location reversed on P/N 0514209-3 & 0514209-4. The information contained here has been verified to be correct.					
FP172	FP1720001 thru FP1720003	MC0511240-4	MC0511240-2 2	MC0511240-3	MC0511240-6 2	SRTEM2
FR172E,F,G	FR1720001 thru FR17200190	MC0511240-5	MC0511240-2 2	MC0511240-3	MC0511240-6 2	SRTEM2
FR172G	FR17200191 thru FR17200225	MC0511240-9	MC0511240-7 2	MC0511240-8	MC0511240-10 2	SRTEM2
FR172H	FR17200226 thru FR17200350	MC0511240-15	MC0511240-11 2	MC0511240-12	MC0511240-14 2	SRTEM2
FR172J,K	FR17200351 thru FR17200655	MC0511243-4 2	MC0511243-5 2	MC0511243-6 2	MC0511243-4 2	SRTEM2
NOTE: Cessna Parts Manual has	the location reversed on P/N 0511243-5 & 0511243-6. The information contained here has been verified to be correct.					
FR172K	FR17200656 thru FR17200675	MC2414002-2 2	MC2414002-1 2	MC2414002-2 2	MC2414002-1 2	SRTEM2
P172	P17257120 thru P17257188	MC0511240-4	MC0511240-2 2	MC0511240-3	MC0511240-6 2	SRTEM2
R172K	R1722000 thru R1723199	MC0511243-4 2	MC0511243-5 2	MC0511243-6 2	MC0511243-4 2	SRTEM2
R172K	R1723200 thru R1723454	MC2414002-2 2	MC2414002-1 2	MC2414002-2 2	MC2414002-1 2	SRTEM2
175	55001 thru 56777	MC0511293-1	MC0511293-3 2	MC0511293-4	MC0511293-2 2	SRTEM1
175A,B,C	17556778 thru 17557119	MC0511293-1	MC0511293-3 2	MC0511293-4	MC0511293-2 2	SRTEM1
177,A,B	17700001 thru 17701636	MC1711015-3	MC1711015-1 2	MC1711015-2	MC1711015-4 2	SRTEM3
177B	17701637 thru 17702752	MC1711015-9 2	MC1711015-7 2	MC1711015-8 2	MC1711015-10 2	SRTEM3
177RG	177RG0105 thru 177RG01366	MC2011015-9 2	MC2011015-5 2	MC2011015-10 2	MC2011015-8 2	SRTEM3
F177RG	F177RG0007 thru F177RG0177	MC2011015-9 2	MC2011015-5 2	MC2011015-10 2	MC2011015-8 2	SRTEM3
180, 180A,B,C,D,E,F	30000 thru 18051312	MC0511000-14	MC0511000-15 2	MC0511000-14	MC0511000-64 2	SRTEM1
180G,H	18051313 thru 18051490	MC0511000-68	MC0511000-69 2	MC0511000-68	MC0511000-70 2	SRTEM1
180H	18051491 thru 18052103	MC0711693-1	MC0711693-2 2	MC0711693-1	MC0711693-2 2	SRTEM1
180H	18052104 thru 18052215	MC0711693-1	MC0711693-2 2	MC0711693-1	MC0711693-2 2	SRTEM1
180H,J	18052216 thru 18052500	MC0711693-8	MC0711693-6 2	MC0711693-8	MC0711693-6 2	SRTEM1
180J	18052501 thru 18052620	MC0711693-8	MC0711693-7 2	MC0711693-8	MC0711693-7 2	SRTEM1
180J,K	18052621 thru 18053203	MC0711693-9 2	MC0711693-11 2	MC0711693-10 2	MC0711693-7 2	SRTEM1

1 Partial rail eligibility
2 These rails have seat adjust holes

Eligibility continued on next page



Model	Serial Number	Inboard LH	Outboard LH	Outboard RH	Inboard RH	Template
182, 182A, B, C, D	33000 thru 18253598	MC0511293-1	MC0511293-3 2	MC0511293-4	MC0511293-2 2	SRTEM1
182E, F, G, H, J, K, L, M, N 1	18253599 thru 18260445	MC0710618-1	MC0710618-5 2	MC0710618-4	MC0710618-6 2	SRTEM1
182N 1, P, Q, R, T182	18260446 thru 18268615	MC0710658-2 2	MC0710658-2 2	MC0710658-2 2	MC0710658-2 2	SRTEM1
A182J, K, L, M, N	A1820001 thru A1820148	MC0710618-1	MC0710618-5 2	MC0710618-4	MC0710618-6 2	SRTEM1
F182P, Q	F18200001 thru F18200169	MC0710658-2 2	MC0710658-2 2	MC0710658-2 2	MC0710658-2 2	SRTEM1
F182RG	FR18200001 thru FR18200070	MC0710658-2 2	MC0710658-2 2	MC0710658-2 2	MC0710658-2 2	SRTEM1
R182/TR182	R18200001 thru R18202041	MC0710658-2 2	MC0710658-2 2	MC0710658-2 2	MC0710658-2 2	SRTEM1
185, A, B, C, D 1	1850001 thru 1850806	MC0511000-68	MC0511000-69 2	MC0511000-68	MC0511000-70 2	SRTEM1
185D 1, E, A185E 1	1850807 thru 18501599	MC0711693-1	MC0711693-2 2	MC0711693-1	MC0711693-2 2	SRTEM1
A185E 1	18501600 thru 18501954	MC0711693-1	MC0711693-4 2	MC0711693-1	MC0711693-4 2	SRTEM1
A185E 1, A185F 1	18501955 thru 18502565	MC0711693-8	MC0711693-6 2	MC0711693-8	MC0711693-6 2	SRTEM1
A185F 1	18502566 thru 18502838	MC0711693-8	MC0711693-7 2	MC0711693-8	MC0711693-7 2	SRTEM1
A185F 1	18502839 thru 18504448	MC0711693-9 2	MC0711693-11 2	MC0711693-10 2	MC0711693-7 2	SRTEM1
A188B	18800944 thru 18803968T		Left- MC1613423-3 2		Right- MC1613423-3 2	SRTEM1
T188C	T18803307T thru T18803968T		Left- MC1613423-3 2		Right- MC1613423-3 2	SRTEM1
190, 195	7001 thru 7999	MC0311715-4 2	MC0311715-3 2	MC0311715-3 2	MC0311715-4 2	SRTEM1
190, 195	16000 thru 16183	MC0311715-4 2	MC0311715-3 2	MC0311715-3 2	MC0311715-4 2	SRTEM1
210-5 (205)	2050001 thru 2050480	MC1210408-1	MC1210408-5 2	MC1210408-4	MC1210408-6 2	SRTEM1
210-5A (205A)	2050481 thru 2050577	MC1210408-1	MC1210408-5 2	MC1210408-4	MC1210408-6 2	SRTEM1
206	2060001 thru 2060275	MC1210408-1	MC1210408-5 2	MC1210408-4	MC1210408-6 2	SRTEM1
U206A, B, C, D, E 1	U2060276 thru U20601587	MC1210408-1	MC1210408-5 2	MC1210408-4	MC1210408-6 2	SRTEM1
TU206A, B, C, D, E 1	U2060276 thru U20601587	MC1210408-1	MC1210408-5 2	MC1210408-4	MC1210408-6 2	SRTEM1
P206A, B, C, D, E	P2060001 thru P20600647	MC1210408-1	MC1210408-5 2	MC1210408-4	MC1210408-6 2	SRTEM1
TP206A, B, C, D, E	P2060002 thru P20600647	MC1210408-1	MC1210408-5 2	MC1210408-4	MC1210408-6 2	SRTEM1
U206E 1, F 1	U20601588 thru U20601874	Not available	MC1210408-21 2	MC1210408-14	MC1210408-12 2	SRTEM1
TU206E 1, F 1	U20601588 thru U20601874	Not available	MC1210408-21 2	MC1210408-14	MC1210408-12 2	SRTEM1
U206F 1, G 1	U20601875 thru U20605309	MC1210408-18 2	MC1210408-21 2	MC1210408-17 2	MC1210408-12 2	SRTEM1
TU206F 1, G 1	U20601875 thru U20605309	MC1210408-18 2	MC1210408-21 2	MC1210408-17 2	MC1210408-12 2	SRTEM1
U206G 1	U20605310 thru U20607020	MC1210408-24 2	MC1210408-21 2	MC1210408-23 2	MC1210408-12 2	SRTEM1
TU206G 1	U20605310 thru U20607020	MC1210408-24 2	MC1210408-21 2	MC1210408-23 2	MC1210408-12 2	SRTEM1
207 1, T207 1	20700001 thru 20700215	MC1210408-1	MC1210408-9 2	Not Available	MC1210408-6 2	SRTEM1
207 1, T207	20700216 thru 20700562	MC1210408-18 2	MC1210408-15 2	MC1210408-16 2	MC1210408-12 2	SRTEM1
207A 1, T207A 1	20700216 thru 20700562	MC1210408-18 2	MC1210408-15 2	MC1210408-16 2	MC1210408-12 2	SRTEM1
207A 1, T207A 1	20700563 thru 20700788	MC1210408-24 2	MC1210408-15 2	MC1210408-22 2	MC1210408-12 2	SRTEM1
210, 210A	21057001 thru 21057840	Not Available	MC1210025-3 2	Not Available	MC1210025-2 2	SRTEM1
210B, C, D, E, F, G, H, J	21057841 thru 21059199	MC1210408-1	MC1210408-5 2	MC1210408-4	MC1210408-6 2	SRTEM1
210K, L 1, T210K, L 1	21059200 thru 21060539	Fwd MC1210520-11 2 Removable MC1210520-3	Fwd MC1210520-9 2	Fwd MC1210520-12 2	Fwd MC1210520-2 2	SRTEM1
210L 1, M, T210L 1, M	21060540 thru 21062954	Fwd MC1210520-11 2 Removable MC1210520-3	Fwd MC1211514-1 2	Fwd MC1211514-1 2	Fwd MC1210520-2 2	SRTEM1
210N, R, T210N, R	21062955 thru 21065009	Fwd MC1210520-15 2	Fwd MC1211514-2 2	Fwd MC1211514-2 2	Fwd MC1210520-16 2	SRTEM1/3
P210N 1	P21000001 thru P21000150	Fwd MC1210520-11 2 Removable MC1210520-3	Fwd MC1211514-1 2	Fwd MC1211514-1 2	Fwd MC1210520-2 2	SRTEM1
P210N 1, R	P21000151 thru P21000874	Fwd MC1210520-15 2	Fwd MC1211514-2 2	Fwd MC1211514-2 2	Fwd MC1210520-16 2	SRTEM1/3
T210F, G, H, J	T2100001 thru T2100454	MC1210408-1	MC1210408-5 2	MC1210408-4	MC1210408-6 2	SRTEM1
305A, B, C, D, E, F	All	Front Seat Left-MC0611134-3 2		Front Seat Right-MC0611134-2 2		SRTEM1
Most 310 and 320	Cessna Manufactured	Left-0812200-125		Right-0812200-126		SRTEM1

1 Partial model eligibility
2 These rails have seat adjust holes

Seat Rails

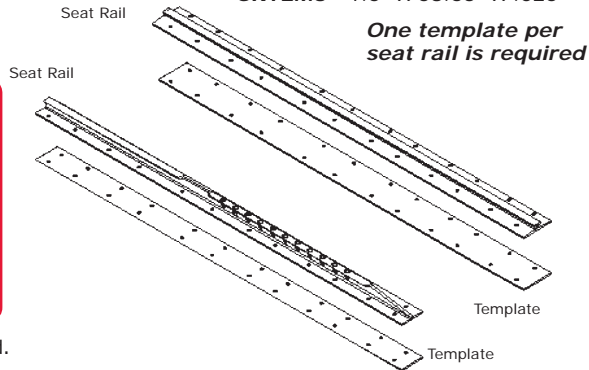
Templates for Cessna Seat Rails

Templates make the job of transferring the original rivet hole pattern from the old seat rail to the new seat rail easy!

- Inexpensive
- Achieve a precise fit every time

- To use the templates**
1. Clamp the template to your old seat rail.
 2. Drill holes through the holes in the old seat rail into the template.
 3. Clamp the template to the new seat rail and drill several holes through the template and new seat rail.
 4. Set the new seat rail in position in the aircraft and check for proper seat rail alignment. The seat rails must be properly aligned and parallel with each other.
 5. Clamp the templates again to the new seat rail and make any required alignment adjustments discovered during the aircraft test installation.
 6. Drill all of the required holes through the template and the new seat rail.

SRTEM1 1.5" X 38" X .025"
SRTEM2 2.25" X 30" X .025"
SRTEM3 1.5" X 58.63" X .025"



Models 150-152 and 190-195 do not require templates as the screw holes are pre-drilled. See seat rail eligibility for the template for your seat rails.

Seat Rail Extrusion

Ideal for the home built aircraft! For custom projects McFarlane offers eight design types. Blank extrusion can be cut to most any length and is sold by the inch. We can also custom machine to your specifications.

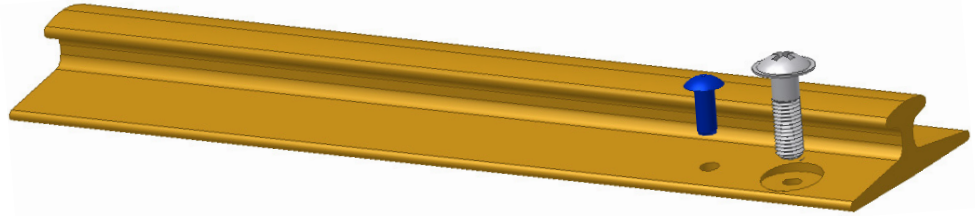
 P/N STE101 1 1/2" X 7/10" X 1/2"	 P/N STE102 2 3/10" X 7/10" X 1/2"	 P/N STE103 1 1/2" X 1/2" X 1/2"	 P/N STE104 2 3/10" X 1/2" X 1/2"
 P/N STE108 1 3/4" X 5/8" X 1/2"	 P/N STE109 2 3/10" X 3/4" X 1"	 P/N STE105 1.34" X 0.37"	 P/N 6656 1.34" X 0.37"

Seat Rail Rivet and Screw Kits

McFarlane offers either rivets or screws as convenient kits containing AN and MS hardware. Since it is difficult to install many of the rivets required to attach the seat rail, it is permissible to substitute screws with ultimate tensile strength exceeding 50 ksi with lock nuts provided the holes are ream fit and spotfaced. Each kit contains enough rivets or screws to install four seat rails. These kits do not contain all required hardware for Cessna model 177 seat rails.

Installation hardware items are also available separately.

RIVET KIT 1		
1/8 & 5/32 Universal Head Rivet Kit		
Qty	U/M	Part Number
22	Grams	MS20470 AD4-5
11	Grams	MS20470 AD4-6
14	Grams	MS20470 AD4-7
6	Grams	MS20470 AD4-10
6	Grams	MS20470 AD4-12
18	Grams	MS20470 AD5-5
13	Grams	MS20470 AD5-6
13	Grams	MS20470 AD5-7
10	Grams	MS20470 AD5-10
10	Grams	MS20470 AD5-12



SR150-SCREW-KT			
Contains #10 screws and hardware required for all Cessna 150/152 models			
Qty	Part Number	Desc.	Size
40	MS27039-1-08	Screw	10-32 X .531
2	MS27039-1-09	Screw	10-32 X .594
2	MS27039-1-17	Screw	10-32 X 1.094
40	MS21044N3	Nut	Nylon Lock, 10-32

FAA General Aviation Airworthiness Information Bulletin CE-90-03R2, 08/26/2002 Original Issue 01/16/1991

This alert gives direction for the replacement of seat rails for most Cessna airplanes as required by AD 87-20-03R2. This alert advises all owners and operators of the necessity to install all required fasteners when seat rails are being replaced. Many seat rails are manufactured with pilot holes only and do not contain all holes required for installation of the seat rail in the airplane. It is, therefore, necessary for the installer to assure that there are sufficient holes to accommodate all required fasteners.

Note these recommendations:

1. When replacing a seat rail, note the number and location of all fastener holes on the seat rail being removed.
2. Match these holes against the holes in the replacement seat rail. If the replacement seat rail does not have all of the same holes at the same locations, they must be drilled.
3. Since it is difficult to install many of the rivets required to attach the seat rail, it is permissible to substitute screws with ultimate tensile strength exceeding 50 ksi. Example of such screws are AN515, AN520, AN525, MS35206, MS35207, MS35214, MS35215, MS35218, MS35219, MS51957 or MS51958 with lock nuts, provided the holes are ream fit and spotfaced. For further information contact your local FAA office.

Spotface Kit

Now modified for rail cap clearance!

Kit P/N SPOTFACE KIT

Contains a tool used with an electric drill to make a flat spot for screws. Cutter comes with three pilots.

Components sold as a kit or separately by part number.

- Cutter P/N 6080,
- 1/8" pilot P/N 6078
- 5/32" pilot P/N 6076
- 3/16" pilot P/N 6077
- Pouch P/N 6090



SR6-SCREW-KT			
Contains #6 and #8 screws and hardware			
Qty	Part Number	Desc.	Size
140	MS35206-229	Screw	6-32 X .438
16	MS35206-230	Screw	6-32 X .5
12	MS27039-0811	Screw	8-32 X .719
12	MS27039-0812	Screw	8-32 X .781
12	MS27039-0813	Screw	8-32 X .844
12	MS27039-0814	Screw	8-32 X .906
35	NAS21042-08	Nut	Small Wrench Surface
80	NAS21042-06	Nut	Small Wrench Surface
80	MS21044N06	Nut	Nylon Lock, 6-32
200	AN960-6L	Washer	#6 Thin
100	AN960-8L	Washer	#8 Thin

SR8-SCREW-KT			
Contains #8 screws and hardware			
Qty	Part Number	Desc.	Size
140	MS27039-0808	Screw	8-32 X .531
12	MS27039-0809	Screw	8-32 X .594
12	MS27039-0810	Screw	8-32 X .656
12	MS27039-0811	Screw	8-32 X .719
12	MS27039-0812	Screw	8-32 X .781
12	MS27039-0813	Screw	8-32 X .844
12	MS27039-0814	Screw	8-32 X .906
80	NAS21042-08	Nut	Small Wrench Surface
80	MS21044N08	Nut	Nylon Lock, 8-32
200	AN960-8L	Washer	#8 Thin

Cargo Tie Downs

Secure your cargo

P/N TDC-208

Cessna 208 and 208B aircraft Clamps to seat rails to provide tie down points to secure cargo.

- 4 required for every 100 lbs of cargo
- Anodized aluminum for durability

Note: This product is not to be used as a seat stop.

Manufactured by F Atlee Dodge

FAA-PMA



Folding Rear Seats

Convert from people to cargo in just a few minutes!

Left P/N 3187L, Right P/N 3187R

See page 216 for additional information

Aircraft Model
170, 170A,B
172 thru 172S
175, 175A,B,C
180, 180A,B,C,D,E,F,G,H,J,K
182 thru 182T
185, 185A,B,C,D,E,A185E,A185F

20 Pounds Lighter!



Manufactured by F Atlee Dodge

Heavy Duty Seat Back Frame

10 oz. heavier with less tendency to wear out!

P/N 3226

206 Series aircraft, see page 216 for additional information.

Manufactured by F Atlee Dodge



Safari Seat for PA-18, PA-19 Series

P/N 6151

Easily installed and removed

Clamps in and designed for easy removal with quick release pins.

Weight saver

Lightweight folding rear seat saves 10 pounds over existing seat.

STC-PMA

Saves 10 Pounds!

Manufactured by F Atlee Dodge



Folding Front Seat Kit for PA-18, PA-19 Series

Makes entry and loading much easier

P/N 3186

FAA-PMA/STC



Manufactured by F Atlee Dodge

Seat Feet for Beechcraft Queen Air, King Air and Airliner

Save up to 64%

P/N CA100-530448-5	P/N CA100-530448-7	P/N CA50-534436-5
--------------------	--------------------	-------------------

Part Number	Model Eligibility
CA100-530448-5	C90,C90A,C90(SE),E90,F90,A100,B100,200,200T,200C,200CT,B200,B200C,B200CT
CA100-530448-7	C90,C90A,E90,F90,A100,B100,200,200T,200C,200CT,B200,B200C,B200CT
CA50-534436-5	65,80,A80,88,90,A90,99,99A,A99A,B90,B99,C99,100,A100,B100

Manufactured by PMA Products

Pilot/Copilot Seat Rail Repair Kit for Cessna Citation Aircraft

P/N MCSK101

Save time and money!

McFarlane has created a patented solution, using input from Citation mechanics and our extensive experience with Cessna seat rails.

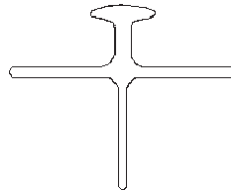
Eligible for installation on all Cessna 500 and 501 series aircraft.

- FAA-PMA/STC approved
- Stronger than the Cessna splice repair
- No splice kit needed
- Makes future replacements bolt-in only
- Complete installation tool kit may be purchased or rented
- No cutting or riveting below the floor level

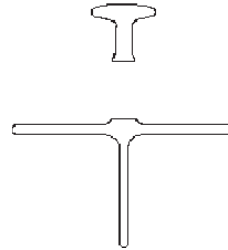
Patent Number 7,168,674 B2



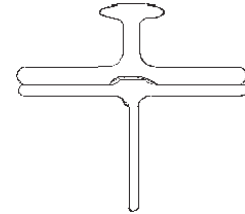
Original Cessna Seat Rail Extrusion



Cut the rail cap off using the McFarlane tool kit



Bolt the McFarlane replacement seat rail to the Cessna extrusion



Seat Stop Kits for Cessna Aircraft

McFarlane Seat stops are stronger than the originals!

Kits contain FAA-PMA and industry standard components



Model	Serial Number	Part Number
150F, G, H, J, K, L	15063763 thru 15073658	Seat Stop Kit 3
A150K, L	A1500001 thru A1500342	Seat Stop Kit 3
F150G, H, J, K, L	F1500068 thru F15000863	Seat Stop Kit 3
FA150K, L	FA1500001 thru FA1500166	Seat Stop Kit 3
172A, B, C	28000 thru 17249544	Seat Stop Kit 1
172D, E, F, G, H, I, K, L, M, N, P, Q	17249545 thru 17276516	Seat Stop Kit 2
F172M, N, P	F17200905 thru F17202238	Seat Stop Kit 2
FR172E, F, J, K	FR17200001 thru FR17200675	Seat Stop Kit 2
P172	P17257120 thru P17257188	Seat Stop Kit 2
172P	17276517 thru 17276673	Seat Stop Kit 1
F172P	F17202239 thru F17202254	Seat Stop Kit 1
R172K	R1722000 thru R1723454	Seat Stop Kit 2
172RG	172RG0001 thru 172RG1191	Seat Stop Kit 2
175	55001 thru 17557119	Seat Stop Kit 1
177, A, B	17700001 thru 17702752	Seat Stop Kit 2
177RG	177RG0001 thru 177RG1366	Seat Stop Kit 2
180, A, B, C, D, E, F, G, H, J, K	30000 thru 18053203	Seat Stop Kit 1
182, A, B, C, D, E, F, G, H	33000 thru 18256684	Seat Stop Kit 1
182J, K, L, M, N, P, Q, R	18256685 thru 18268586	Seat Stop Kit 1
F182P, Q	F18200001 thru F18200169	Seat Stop Kit 1
FR182	FR18200001 thru FR18200070	Seat Stop Kit 1
T182	18267716 thru 18268541	Seat Stop Kit 1
R182/ TR182	R18200001 thru R18202041	Seat Stop Kit 1
185, A, B, C, D, E, A185E, F	1850001 thru 18504448	Seat Stop Kit 1
188, A, A188, A	1880001 thru 18800832	Seat Stop Kit 1
188B	188002349 thru 18803846	Seat Stop Kit 1
T188C	188002349T thru 18803968T	Seat Stop Kit 1
T18803297T thru T18803968T		Seat Stop Kit 1
Standard Seats		
188B	18800833 thru 18802348	Seat Stop Kit 1
A188B	18800967T thru 18802348T	Seat Stop Kit 1
Infinitely Adjustable Seats		
188B	18800833 thru 18802348	Seat Stop Kit 2
A188B	18800967T thru 18802348T	Seat Stop Kit 2
Pilot/Copilot & Middle Seats		
210-5 (205), 210-5A (205A)	205-0001 thru 205-0577	Seat Stop Kit 1
Pilot/Copilot Seats		
206	206-0001 thru 206-0275	Seat Stop Kit 1
U206, A, B, C, D, TU206A, B, C, D	U206-0276 thru U206-1444	Seat Stop Kit 1
P206, A, B, C, D, TP206A, B, C, D	P206-0001 thru P206-0603	Seat Stop Kit 1
U206E, F, G, TU206E, F, G	U20601588 thru U20607020	Seat Stop Kit 1
Standard Pilot/Copilot Seats		
U206E, TU206E	U20601445 thru U20601587	Seat Stop Kit 1
P206E, TP206E	P20600604 thru P20600647	Seat Stop Kit 1
Infinitely Adjustable Pilot/Copilot Seats		
U206E, TU206E	U20601445 thru U20601587	Seat Stop Kit 2
P206E, TP206E	P206-0604 thru P206-0647	Seat Stop Kit 2
Middle Seats		
206, U206, A, B, C, D, E, F, G	206-0001 thru 206-0275	Seat Stop Kit 1
TU206A, B, C, D, E, F, G	U206-0276 thru U20607020	Seat Stop Kit 1
P206, A, B, C, D, E	P206-0001 thru P206-0647	Seat Stop Kit 1
TP206A, B, C, D, E	P206-0001 thru P206-0647	Seat Stop Kit 1

Model	Serial Number	Part Number
Standard Pilot/Copilot Seats		
207, T207	20700001 thru 20700215	Seat Stop Kit 1
Infinitely Adjustable Pilot/Copilot Seats		
207, T207	20700149 thru 20700215	Seat Stop Kit 2
Pilot/Copilot Seats		
207A, T207A	20700216 thru 20700788	Seat Stop Kit 1
Middle Seats		
207, A, T207, A	20700001 thru 20700788	Seat Stop Kit 1
Pilot/Copilot Seats		
210, A, B, C, D, E, F, G, H, J, K, L, M, N, R	57001 thru 21065009	Seat Stop Kit 1
T210	T210-0001 thru T210-0454	Seat Stop Kit 1
Middle Seat		
210K, L, M, N, R	21059200 thru 21065009	Seat Stop Kit 1
T210K, L, M, N, R	21059200 thru 21065009	Seat Stop Kit 1
P210N, R	P21000001 thru P210000867	Seat Stop Kit 1
Rear Seats		
210D, E, F, G, H, J	21058221 thru 21059199	Seat Stop Kit 1
T210	T210-0001 thru T210-0454	Seat Stop Kit 1
Pilot/Copilot Seats		
T210F, G, H, J	T2100001 thru T2100454	Seat Stop Kit 1
P210N, R	P2100001 thru P21000874	Seat Stop Kit 1



SEAT STOP KIT 1		
Qty	P/N	Description
1	MC0713074-1	Seat Stop "U" Design
1	MS24665-132	Cotter Pin, 1/16" X 1/2"
1	MS20392-1C21	Clevis Pin
SEAT STOP KIT 2		
Qty	P/N	Description
1	MC0511242-1	Seat Stop "Bar Design"
1	MS35265-41	Screw
SEAT STOP KIT 3		
Qty	P/N	Description
1	MC0713074-1	Seat Stop "U" Design
1	MS24665-132	Cotter Pin, 1/16" X 1/2"
1	MS20392-1C21	Clevis Pin
2	NAS43DD1-9FC	Spacer

FAA-PMA Approved

Seat Roller Kits for Cessna Aircraft

Now also approved for 300-400 series aircraft!

McFarlane seat parts were developed to assist in complying with the parts replacement requirements of FAA Airworthiness Directive 87-20-03. This AD requires the periodic inspection and replacement of seat components of the entire Cessna light aircraft fleet. Our parts are direct replacements for the wear related seat components. All parts are available individually or as convenient kits.

Rollers

- Fabricated from molydisulfide filled nylon for improved strength and self-lubrication.
- Fully machined from extruded stock for a finer surface finish and higher strength.



Bushings

- Machined from alloy steel
- Longer life
- Greater wear resistance



Washers

- Super tough acetyl plastic
- Resists wear and aging
- MC1714000-41 full round washer also available



Choose the Correct Kit

The seat related replacement parts are not serial number specific, as the type of seat installed in the aircraft was optional when the aircraft was ordered from the factory. A common seat configuration is the pilot seat being "articulating" or "infinitely adjustable" while the co-pilot seat is the "standard" or "vertically adjustable" style. **One kit per seat is required.**

The most positive way to ensure that you are choosing the proper seat kit for your aircraft is to measure the rollers.

SEAT-KT-1

Roller diameter approximately 1 3/8"

This kit is used with the "infinitely adjustable" or "articulating" seats installed in the Cessna single engine aircraft from 1963 through 1986. Two adjustment crank handles identify this seat. The backrest angle is adjusted with a crank. It is also used with some 336-337 series aircraft. The SEAT-KT-1 contains the same components as four of the Cessna 1714000K200 kits.

All seats in the 177 Cardinal will use the large seat roller and require this kit. These parts are not used on models 150-152.

- (8) MC1714000-22 Washer
- (4) MCS1704-1 Roller
- (4) MC1414104-54 Bushing



SEAT-KT-2

Roller diameter approximately 5/8"

This kit is used with the "Standard" or "Vertically adjustable" seat installed in Cessna single engine aircraft from 1963 through 1986. This seat is identified by one or no adjustment crank handles. The seat back angle is adjusted with a lever on the side of the seat back. It is also used with some 336-337 series aircraft. The SEAT-KT-2 contains the same components as four of the Cessna 1414100-212 kits.

These parts are not used on models 150-152.

- (8) MCS1554-1 Washer
- (4) MCS1551-1 Roller
- (4) MC1414104-54 Bushing



SEAT-KT-3

Roller diameter approximately 7/8" with no wear washers

This kit is used with all seats in the Cessna 150-152 series aircraft and all Cessna single engine aircraft built before 1963. A welded steel tubing seat frame easily identifies these seats. It is also used with some Cessna twin engine aircraft.

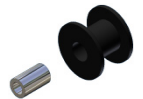
- (4) MC0311310 Roller
- (4) MC0311586 Bushing



Obsolete Roller 1964-1965

Cessna aircraft manufactured in 1964 and 1965 had a spool shape roller with a smaller bushing. Use SEAT-KT-2 to replace this style roller.

The complete kit must be used, as the bushing size is different.



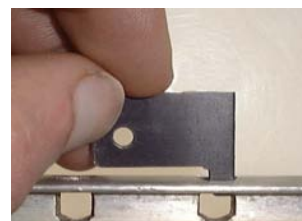
Seat Rail Wear Gauge for Cessna Aircraft

Checks seat rail wear limits as per FAA AD 2011-10-09

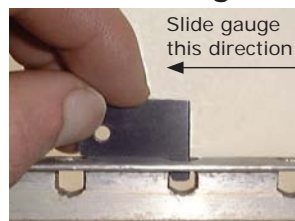
Seat Rail Directive

The McFarlane Seat Rail Wear Gauge is designed to check for seat rail pin engagement hole wear on Cessna aircraft, as required by FAA AD 2011-10-09. This gauge is designed to measure the actual radius wear near the seat stop holes and allows for the 0.020 upper surface wear permitted by the AD. This gauge is very precisely machined.

Fast and Positive - No More Guessing!!



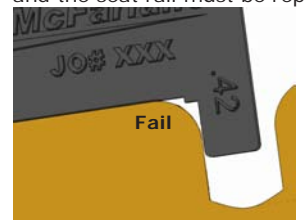
1. Place the gauge into each hole location showing wear.



2. Slide gauge back along top center of the rail until it contacts the hole edge. Make sure to keep the gauge parallel and square to the unworn rail surface.



3. If the step touches the rail, lifting the gauge up, the wear is less than 0.42. If the step does not touch the rail, the wear is more than 0.42 and the seat rail must be replaced.



Note: Earlier versions of the McFarlane Seat Rail Hole Wear Gauge feature a 0.36 and a 0.42 step. The 0.36 step was included per an earlier version of the Airworthiness Directive and is no longer used.



P/N GAUGE SR1

Seat Rails and Seat Parts Seat Roller Housings

Seat Roller Housing Gauge for Cessna Aircraft

P/N TOOL110

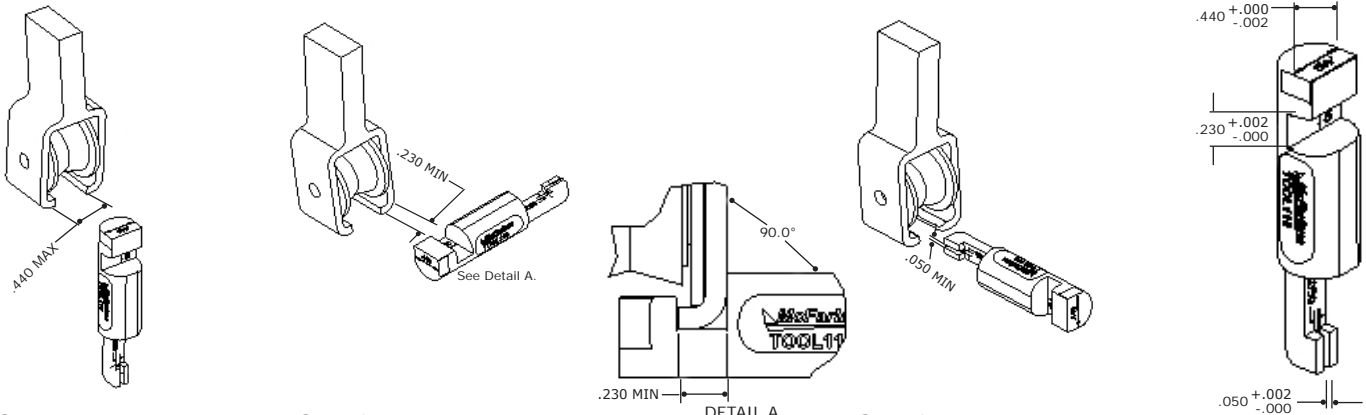
- Hardened Stainless Steel
- Save time! Ten times faster than calipers
- Step by step instructions
- Measures all three dimensions without removing rollers

Checks Cessna seat roller housing limits as per FAA AD 2011-10-09

The McFarlane Seat Roller Housing Gauge is designed to facilitate inspection of seat roller housings for wear in Cessna aircraft as required by mandatory FAA AD 2011-10-09. Designed for seat roller housings that are replaceable, this gauge simplifies determining whether the housing is in or out of tolerance by allowing the areas of concern to be gauged, as opposed to measuring individual attributes on each seat roller housing with calipers. Do not use on welded/non-replaceable seat roller housings.



P/N TOOL110



Step 1.
.440 gauge surfaces must not enter space between housing tangs.

Step 2.
The bend area of the tang must not enter the space on the gauge marked .230. See Detail A.

Step 3.
The .050 space on the gauge must not fit on the worn area of the tang.

To calibrate; ensure gauge dimensions are within the tolerances shown above.

Seat Roller Housings for Cessna Aircraft

Save \$\$

- Anodized for improved wear and corrosion resistance
- Precision machined with perfected dimensions for smooth installation and operation
- FAA-PMA direct replacement
- Seat roller housings for most single engine Cessna and Skymaster
- Replace out of spec housings as required by FAA AD 2011-10-09
- Convenient flowchart to determine correct housings for your aircraft



P/N MC1714000-33



P/N MC1200603-42



P/N MC1414104-39



P/N MC1414104-61B

Housing/Bracket Assemblies - P/N's with B suffix

Save time and money with housing/bracket assemblies. Most housings with a locking pin hole are available with or without the MC1414104-8 bracket. Just add a "B" suffix to the housing part number to buy the complete assembly.

McFarlane highly recommends buying complete assemblies. The bracket rivet spacing is very close making riveting difficult without special tooling.

Bracket also available separately.



Typical seat roller housing



Typical seat roller housing-bracket assembly



Bracket
P/N MC1414104-8

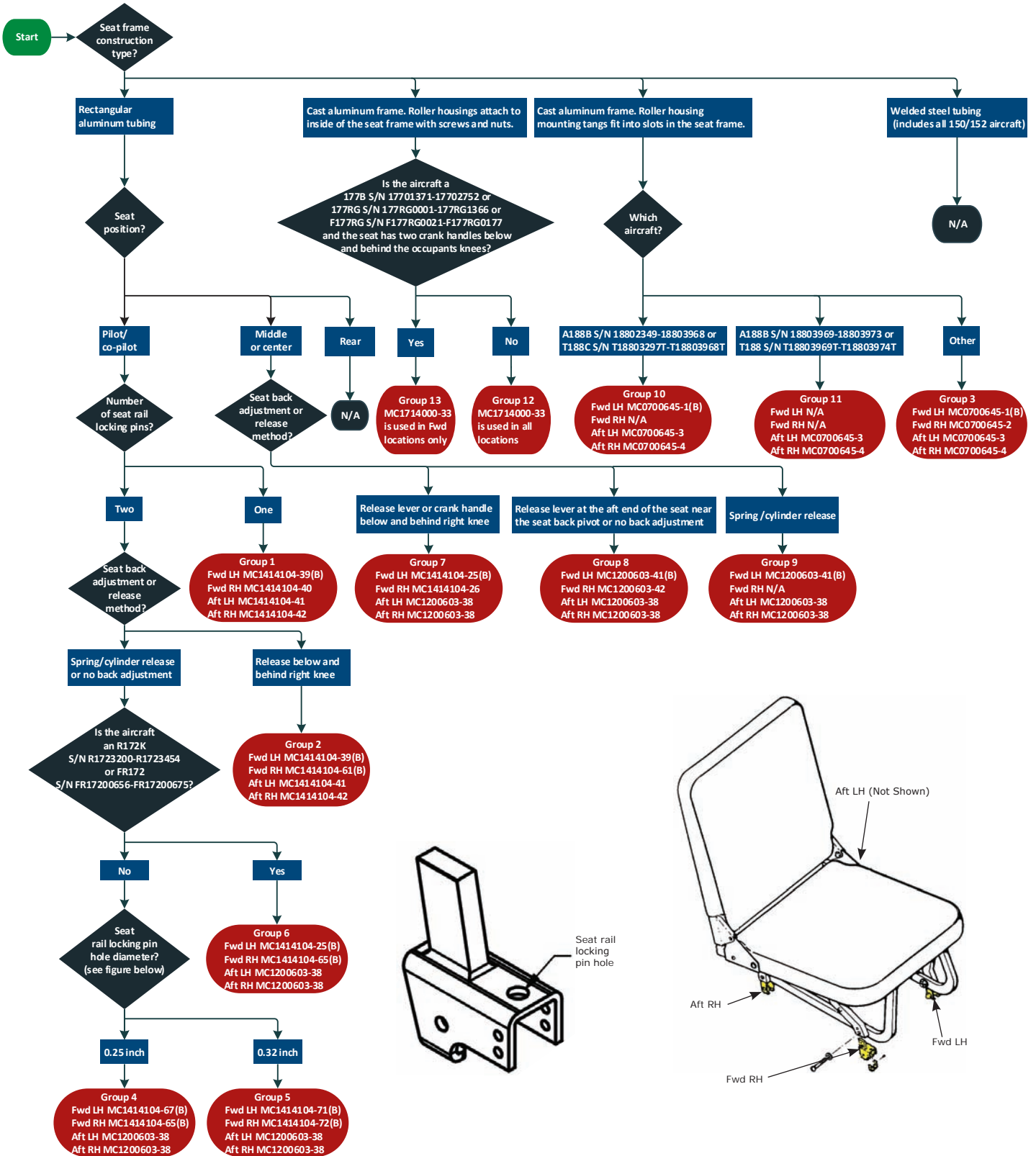
Roller housing/bracket assemblies save time. The old bracket does not have to be removed and reinstalled.

Flowchart to determine correct housings on the following page

Seat Rails and Seat Parts Seat Roller Housings

Need help selecting the correct housing for your seat?

With over two dozen part numbers and many different seat options, this can be very challenging. Only McFarlane has a convenient flowchart to make it easy!



Seat Rails

Seat Rails and Seat Parts Seat Roller Housings

Group 1		Group 2	
<p>Aft RH P/N MC1414104-42</p> <p>Side View End View</p>	<p>Aft LH P/N MC1414104-41</p> <p>Side View End View</p>	<p>Aft RH P/N MC1414104-42</p> <p>Side View End View</p>	<p>Aft LH P/N MC1414104-41</p> <p>Side View End View</p>
<p>Fwd RH P/N MC1414104-40</p> <p>Side View End View</p>	<p>Fwd LH P/N MC1414104-39 P/N MC1414104-8 bracket available. Add "B" suffix to housing P/N for housing/bracket assembly.</p> <p>Side View End View</p>	<p>Fwd RH P/N MC1414104-61 P/N MC1414104-8 bracket available. Add "B" suffix to housing P/N for housing/bracket assembly.</p> <p>Side View End View</p>	<p>Fwd LH P/N MC1414104-39 P/N MC1414104-8 bracket available. Add "B" suffix to housing P/N for housing/bracket assembly.</p> <p>Side View End View</p>
Group 3		Group 4	
<p>Aft RH P/N MC0700645-4</p> <p>Side View End View</p>	<p>Aft LH P/N MC0700645-3</p> <p>Side View End View</p>	<p>Aft RH P/N MC1200603-38</p> <p>Side View End View</p>	<p>Aft LH P/N MC1200603-38</p> <p>Side View End View</p>
<p>Fwd RH P/N MC0700645-2</p> <p>Side View End View</p>	<p>Fwd LH P/N MC0700645-1 P/N MC1414104-8 bracket available. Add "B" suffix to housing P/N for housing/bracket assembly.</p> <p>Side View End View</p>	<p>Fwd RH P/N MC1414104-65 P/N MC1414104-8 bracket available. Add "B" suffix to housing P/N for housing/bracket assembly.</p> <p>Side View End View</p>	<p>Fwd LH P/N MC1414104-67 P/N MC1414104-8 bracket available. Add "B" suffix to housing P/N for housing/bracket assembly.</p> <p>Side View End View</p>
Group 5		Group 6	
<p>Aft RH P/N MC1200603-38</p> <p>Side View End View</p>	<p>Aft LH P/N MC1200603-38</p> <p>Side View End View</p>	<p>Aft RH P/N MC1200603-38</p> <p>Side View End View</p>	<p>Aft LH P/N MC1200603-38</p> <p>Side View End View</p>
<p>Fwd RH P/N MC1414104-72 P/N 2514044-2 bracket used with this housing is not available from McFarlane at this time.</p> <p>Side View End View</p>	<p>Fwd LH P/N MC1414104-71 P/N 2514044-2 bracket used with this housing is not available from McFarlane at this time.</p> <p>Side View End View</p>	<p>Fwd RH P/N MC1414104-65 P/N MC1414104-8 bracket available. Add "B" suffix to housing P/N for housing/bracket assembly.</p> <p>Side View End View</p>	<p>Fwd LH P/N MC1414104-25 P/N MC1414104-8 bracket available. Add "B" suffix to housing P/N for housing/bracket assembly.</p> <p>Side View End View</p>

Group 7		Group 8			
<p>Aft RH P/N MC1200603-38</p> <p>Side View End View</p>	<p>Aft LH P/N MC1200603-38</p> <p>Side View End View</p>	<p>Aft RH P/N MC1200603-38</p> <p>Side View End View</p>	<p>Aft LH P/N MC1200603-38</p> <p>Side View End View</p>		
<p>Fwd RH P/N MC1414104-26</p> <p>Side View End View</p>	<p>Fwd LH P/N MC1414104-25 P/N MC1414104-8 bracket available. Add "B" suffix to housing P/N for housing/bracket assembly.</p> <p>Side View End View</p>	<p>Fwd RH P/N MC1200603-42</p> <p>Side View End View</p>	<p>Fwd LH P/N MC1200603-41 P/N MC1414104-8 bracket available. Add "B" suffix to housing P/N for housing/bracket assembly.</p> <p>Side View End View</p>		
Group 9		Group 10			
<p>Aft RH P/N MC1200603-38</p> <p>Side View End View</p>	<p>Aft LH P/N MC1200603-38</p> <p>Side View End View</p>	<p>Aft RH P/N MC0700645-4</p> <p>Side View End View</p>	<p>Aft LH P/N MC0700645-3</p> <p>Side View End View</p>		
<p>Fwd RH</p> <p>N/A</p>	<p>Fwd LH P/N MC1200603-41 P/N MC1414104-8 bracket available. Add "B" suffix to housing P/N for housing/bracket assembly</p> <p>Side View End View</p>	<p>Fwd RH</p> <p>N/A</p>	<p>Fwd LH P/N MC0700645-1 P/N MC1414104-8 bracket available. Add "B" suffix to housing P/N for housing/bracket assembly.</p> <p>Side View End View</p>		
Group 11		Group 12		Group 13	
<p>Aft RH P/N MC0700645-4</p> <p>Side View End View</p>	<p>Aft LH P/N MC0700645-3</p> <p>Side View End View</p>	<p>Aft RH P/N MC1714000-33</p>	<p>Aft LH P/N MC1714000-33</p>	<p>Aft RH</p> <p>N/A</p>	<p>Aft LH</p> <p>N/A</p>
<p>Fwd RH</p> <p>N/A</p>	<p>Fwd LH</p> <p>N/A</p>	<p>Fwd RH P/N MC1714000-33</p>	<p>Fwd LH P/N MC1714000-33</p>	<p>Fwd RH P/N MC1714000-33</p>	<p>Fwd LH P/N MC1714000-33</p>

Seat Rails

Seat Rail for Piper Aircraft

P/N MC62557-004 (seat rail - used in all positions)

- Direct replacement - used in all positions
- Precision machined
- Gold anodized for corrosion resistance
- Dry lubricant applied for long service life
- They are prettier too!

Save hundreds of \$\$

Seat Rollers and Bushings for Piper Aircraft

P/N CA18968-000 (small roller - 0.42" OD)

P/N CA87332-002 (large roller - 0.62" OD)

P/N CA41413-038 (bushing - .3060" OD)

- Direct replacement
- Save!



P/N CA18698-000



P/N CA87332-002



P/N CA41413-038

Model	Serial Number	Seat Rail MC62557-004	Seat Roller CA18968-000	Seat Roller CA87332-002	Seat Bushing CA41413-038
PA-23, PA-23-160	All		•		
PA-23-235	All		•		•
PA-23-250	27-1 thru 27-3836, 27-3838 thru 27-3943				•
	27-3837, 27-3944 thru 27-7554168, 27-7654001 and On		•		•
PA-24-250, 400	All		•		
PA-24-260	24-3462 thru 24-4246, 24-4248 thru 24-4299		•		
	24-4247, 24-4300 and On		•		•
PA25, PA25-235	25-1 thru 25-4171				•
PA-28-140, PA-28-150, 151, 160, 161	All	•	■	■	
PA-28-180, PA-28R-180	All	•	■	■	
PA-28-181	All	•	■	■	
PA-28R-200	All	•	■	■	
PA-28-201T, PA-28R-201, 201T	All	•	•	•	
PA-28RT-201, 201T	All	•	■	■	
PA-28-235	All	•	■	■	
PA-28-236	All	•	■	■	
PA-30	30-1 thru 30-852, 30-854 thru 30-901		•		
	30-853, 30-902 and On		•		•
PA-31-300, 325	All		•		•
PA-31-350, PA-31P, PA-31P-350, PA-31T, 31T1, 31T2, 31T3	All		•		•
PA-32-260	All	•	■	■	
PA-32-300,301,301T, PA-32R-300,301,301T, PA-32RT-300, 300T	All	•	■	■	
PA-34-200,200T,220T	All	•	■	■	
PA-39, PA-42, PA-42-720, PA-42-1000	All		•		•
PA-44-180 180T	All	•	•		
PA-46-310P, PA-46-350P (w/ G1000)	All			•	

■ To determine which roller your aircraft requires, verify the outer diameter at the center of the roller:
 0.42" use P/N CA18968-000, 0.62" use P/N CA87332-002

Cargo Tie Down

P/N TDP-31

Secure your cargo

Clamps to seat rails to provide tie down points to secure cargo.

- 4 req. for every 100 lbs of cargo
- Anodized aluminum for durability
- FAA-PMA Piper
- NOT to be used as a seat stop.



Approved models:

PA31, PA31-300, 325,350, P-350, 31P, 31T,31T1, T2, T3



Manufactured by F Atlee Dodge

FAA-PMA Approved

Seat Adjustment Springs for Piper Aircraft

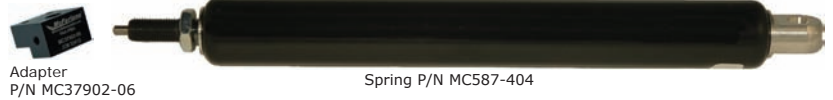
Replacement springs just got more affordable!

- Direct replacement - no conversion kit required
- One required per bucket seat
- Avoid downtime and expense of repeated overhauls

Replacements for both styles now available

**Gas Spring Style
P/N MC587-404**

- Replaces Piper P/N 587-404 or 89178-010
- Originals were manufactured by Stabilus Bloc-O-Lift or Gas Springs Corp Easy Lift
- M10x1 metric thread (~0.39 inch diameter)
- Adapter P/N MC37902-06 also available (threads on end of spring - see figure)



Save\$\$

**Coil Spring/Hydraulic Style
P/N MC555-692**

- McFarlane replaces the old coil spring/hydraulic style with a gas spring
- Replaces Piper P/N 76445-000 or 555-692
- Originals were manufactured by P. L. Porter Hydrolok
- 3/8-24 UNF thread



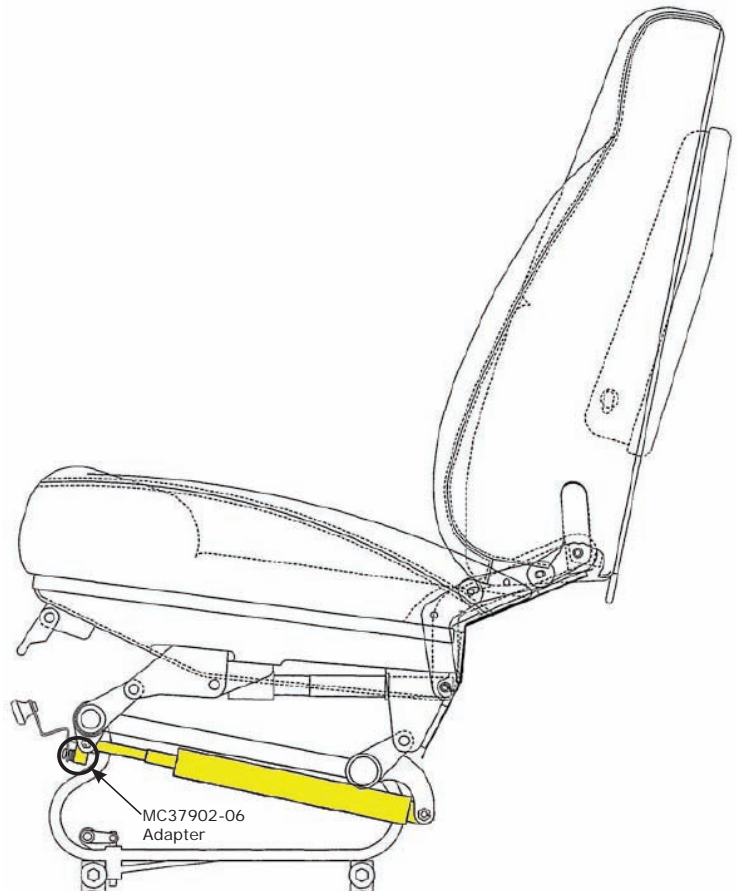
Maintenance Tip:

Aircraft make, model and serial number are not sufficient to ensure the correct replacement spring as many aircraft may have been originally equipped with either one or retrofitted with a conversion kit. If the spring you are replacing is marked with a brand name (e.g. P.L. Porter or Stabilus) the correct replacement is readily identified. The coil spring/hydraulic style are also identifiable by a 1 1/4" diameter visible coil spring. The thread may also be measured to verify the correct identification.



Model	Serial Number	Qty per A/C	Spring MC555-692 (3/8-24 thread)	Spring MC587-404 (M10x1 thread)	Adapter P/N MC37902-06
PA-28-140	28-7425061 and On	2	4	2	2
PA-28-151	All	2	4	2,3	2,3
PA-28-161	2816001 thru 2816119	2	4	2	2
	2841001 thru 2842999	2		2	2
	28-7716001 thru 28-7716073	2	4	2,3	2,3
PA-28-180	28-7716074 thru 28-8616057	2	4		
	28-7405035 and On	2	4	2	2
PA-28-181	2843001 thru 2843999	2		2	2
	2890001 thru 2890205	2	4		
	2890206 thru 28-7790358	2	4	2	2
PA-28-201T	28-7790359 thru 28-8690062	2	4		
	All	2			
PA-28-235	28-7410027 thru 28-7710089	2	4	2	2
PA-28-236	All	2			
PA-28R-200	28R-7435035 thru 28R-7635545	2	4	2	2
PA-28R-201	2837001 thru 2837061	2	4	2	2
	2844001 thru 2844999	2		2	2
	28R-7737002 thru 28R-7837317	2	4	2	2
PA-28R-201T	All	2	4	2	2
PA-28RT-201T	All	2			
PA-32-260	32-7400001 thru 32-7800008	2	4	2	2
PA-32-300	32-7440001 thru 32-7940290	2	4	2	2
PA-32-301, 301T	All	2			
PA-32R-300	All	2	4	2	2
PA-32R-301, 301T	All	2			
PA-32RT-300, 300T	All	2			
PA-34-200	34-7450033 thru 34-7450220	2	4	2	2
PA-34-200T	All	2	4	2	2
PA-34-220T	All	2			
PA-44-180, 180T	All	2			
PA-46-310P	All	4			
PA-46-350P	4622001 thru 4622200	4			
	4636001 thru 4636999	6			
PA-46-500TP	All	4			
PA-46R-350T	All	4			

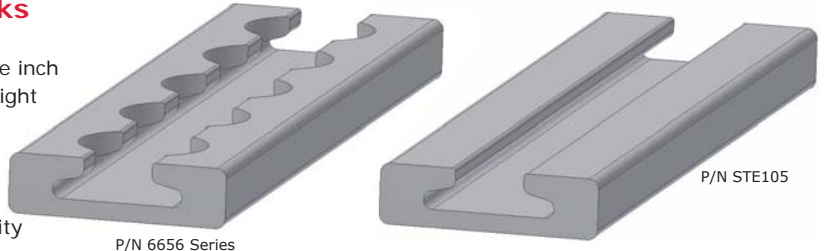
1 Partial model eligibility
 2 When equipped with Piper P/N 587-404 or 89178-010. This includes seats converted per Piper Service Letter 813 using Piper kit number 761 103V, 761 104V or 761 105V.
 3 Some Piper parts catalogs do not list part number 587-404 separately, but list an assembly part number of 89178-010 instead. McFarlane P/N MC587-404 replaces the spring component of this assembly and adapter P/N MC37902-06 replaces the block.
 4 When equipped with Piper P/N 76445-000 or 555-692.



Seat Rails

Browline Style Seat Tracks/Cargo Tracks

- Perfect for homebuilt or experimental projects
- Slotted extrusion with 0.785" diameter openings every one inch
- Dimensions meet MS33601 except thinner for reduced weight (compare to Ankra medium duty 40456-10 series)
- Compatible with common MS33601 cargo tie down and seat stud fittings (see below)
- Precision machined and quality controlled
- Aerospace grade 7075-T6511 aluminum with full traceability



Standard Lengths

P/N 6656-L (L = the minimum length in inches)

Anodized for corrosion protection.

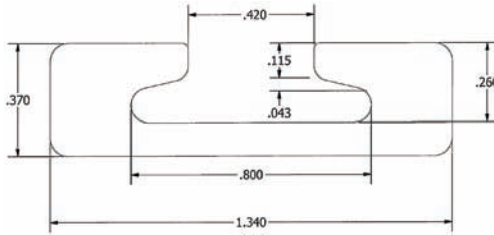
Available in 6, 12, 18, 24, 36, 48, 72, 96, 120, 144, 160, and 179 inch lengths.

P/N STE105

Slotted extrusion without machined 0.785" diameter openings. Non-anodized. Available by the inch.

Custom Tracks

Custom lengths and machining available. Call for details.



Filler Strip for Brownline Style Track
P/N FE200751

- Provides a finished look
- Keeps debris out of the track
- May be cut to length, sold in 25 ft. roll



Browline Style Anchor Plate

P/N 40000-11

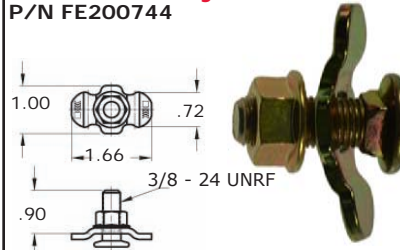
- For use with single stud fittings
- Small and low profile, providing damage protection to cargo and baggage
- An ideal way to support single location fastening of nets, straps, or other equipment
- NSN Number 1560-01-286-1030
- Aluminum alloy, anodized

Working load limit:

4000 lbs @ 0° vertical pull
2000 lbs @ 90° horizontal pull



Threaded Single Stud Fitting with Nut for Brownline Style Track
P/N FE200744



Specifications

Material: Carbon Steel
Finish: Zinc Plated
Working Load Limit:
5000 lbs @ 0° vertical pull
2000 lbs @ 90° horizontal pull

Chair Leg Stud Quick Release Anchor

P/N MC41528-14

- Use with Brownline style track
- Spring loaded fitting snaps securely into place and can be easily moved to different positions.
- Designed to mate with 1" O.D. 0.035" wall tube or a 0.720" O.D. stud.
- 7075 Aluminum



Cargo Tie Down Fittings for Brownline Style Track

- Use with Brownline style track (McFarlane P/N series 6656) or other MS33601 compatible track - sometimes called L-track
- Perfect for net or strap restraint applications
- Spring loaded fitting snaps securely into place and can be easily moved to different positions.



P/N	Description	Figure	A	B	C	D	E	F	0° Vertical Working Load Limit lbs.	90° Horizontal Pull Angle Working Load Limit lbs.
32401	Single Stud Fitting with Ring	1	1.99"	0.93"	1.18"	0.19"	0.63"	1.23"	1333	1000
40340-20	Single Stud Fitting with Ring	1	1.87"	0.87"	1.12"	0.19"	0.71"	1.43"	1000	500
40340-21	Single Stud Fitting with D-Ring	2	2.00"	1.09"		0.19"	0.71"	1.43"	1000	500
47981-10	Double Stud Fitting with Round Ring	3	1.75"	2.32"	2.34"	0.31"	0.76"		10000	5000
47981-11	Double Stud Fitting with Twisted Ring	4	1.56"	2.32"	3.76"	0.27"	0.76"		5000	5000
32505	Triple Stud Fitting without Ring	5	1.12"	0.90"	2.60"				2167	1670
32507	Triple Stud Fitting with Pear Shaped Ring	6	1.12"	0.90"	1.16"	0.25"	4.90"		2000	1670

1 NSN Number 1670-01-243-8877

2 NSN Number 1670-01-261-0567

3 60° Pull angle working load limit = 2000 lbs.

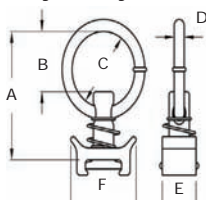


Figure 1

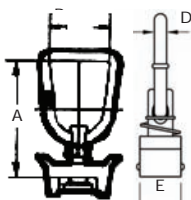


Figure 2

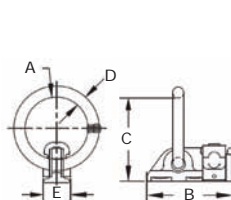


Figure 3

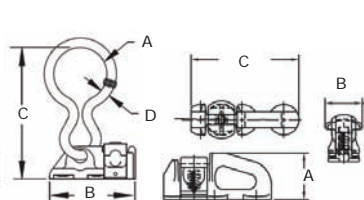


Figure 4

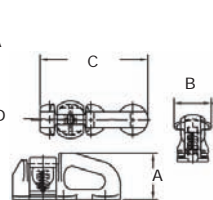


Figure 5

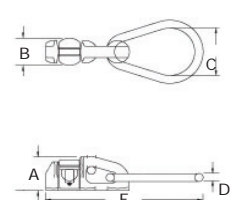
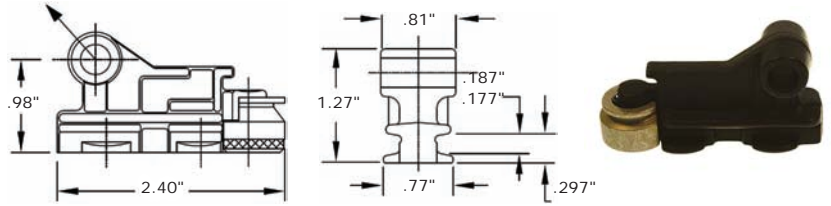


Figure 6

Rear Leg Seat Fitting

P/N 42854-11

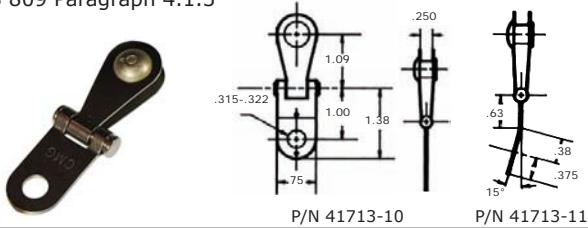
- Compatible with Brownline style track
- 8000 lb load capacity at 48° angle from horizontal
- Cad plated with teflon coating
- Weight .24 lb



Seat Belt Shackles

P/N 41713-10 and 41713-11

- High strength, low profile design
- Made especially for today's lightweight seats
- Stainless steel, cad plated
- Meets the load requirements of NAS 809 Paragraph 4.1.3



Cargo Tie Downs

- Clamps to seat rails to provide tie down points to secure cargo
- 4 required per every 100 lbs of cargo
- Anodized aluminum for durability
- FAA-PMA/STC

Note: This product is not to be used as a seat stop

P/N	Color	Aircraft Model Eligibility
TDC-208	Blue	Cessna 208, 208A, and 208B
TDP-31	Green	Piper PA31, PA31-300, -325, -350, PA31P, PA31P-350, PA31-T, PA31-T1, T2, T3



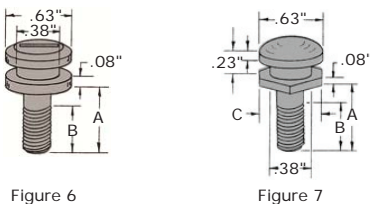
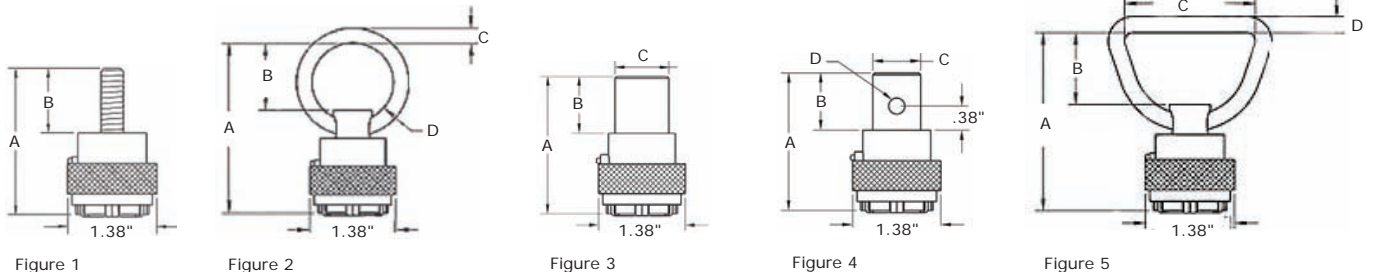
12-Jaw Seat/Cargo Tie Down Quick Disconnect Adapters and Studs (MS22034 style)

- Spring loaded ring locks jaws around stud, and spring loaded lock pin prevents accidental release.
- Use with seat cargo studs shown below. Also works with any MS21234, MS21235 and AM7516 style seat/cargo attach fittings.



P/N	Description	Figure	A	B	C	D	0° Vertical Breaking Strength lbs.	90° Pull Angle Breaking Strength lbs.
33115	12-Jaw, Threaded Stud, 1" x 3/8-24UNF Threaded Stud	1	2.26"	1.00"			5475	2300
33116	12-Jaw, Threaded Stud, 3/4" x 3/8-24UNF Threaded Stud	1	2.01"	0.75"			5475	2300
32326	12-Jaw, Ring	2	2.85"	1.13"	0.25"	1.31"	5475	2300
32334	12-Jaw, Chair Leg Stud, 0.85"	3	2.16"	0.90"	0.85"		N/A	2300
32336	12-Jaw, Chair Leg Stud, 0.88" with 1/4" Hole	4	2.16"	0.90"	0.88"	0.25"	5475	2300
32340	12-Jaw, Chair Leg Stud, 0.85" with 1/4" Hole	4	2.16"	0.90"	0.85"	0.25"	5475	2300
32343	12-Jaw, D-Ring	5	2.82"	1.10"	2.01"	0.25"	5475	2300
32367	12-Jaw, Chair Leg Stud, 0.75" with 3/8" Hole	4	2.32"	1.06"	0.75"	0.375"	5475	2300
FD4015	Stud, 12-Jaw, 1/4-28 UNF with slot	6	0.63"	0.57"			4000	N/A
FD4015M8	Stud, 12-Jaw, 3/8-24 UNF with hex	7	0.63"	0.57"	0.57"		4000	N/A

- 1 Replaces MS22034-1B
- 2 Replaces MS22034-2
- 3 Replaces MS22034-1
- 4 Replaces MS22034-3



Ankra Interior Cargo Fittings

McFarlane is now a full distributor!
Quantity discounts available
Call or visit mcfarlaneaviation.com
for more information.

